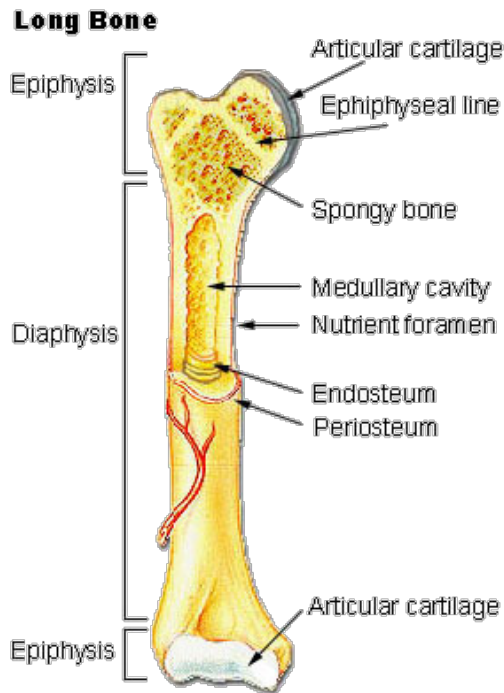


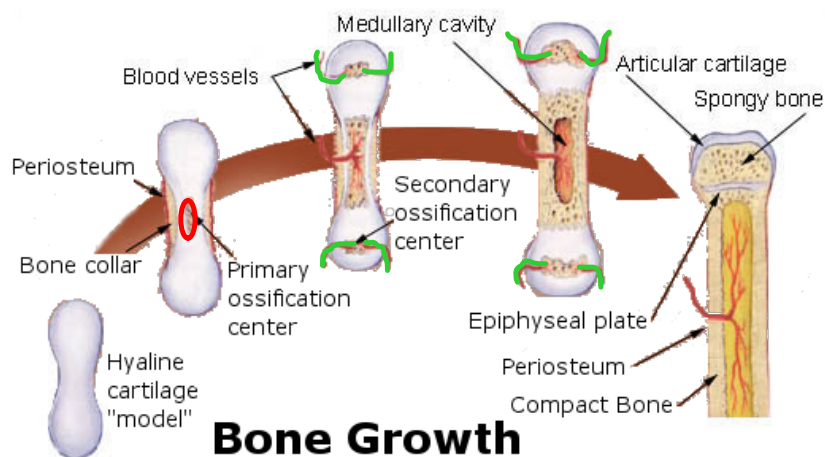
STRUCTURE OF A LONG BONE



PAGE # 17

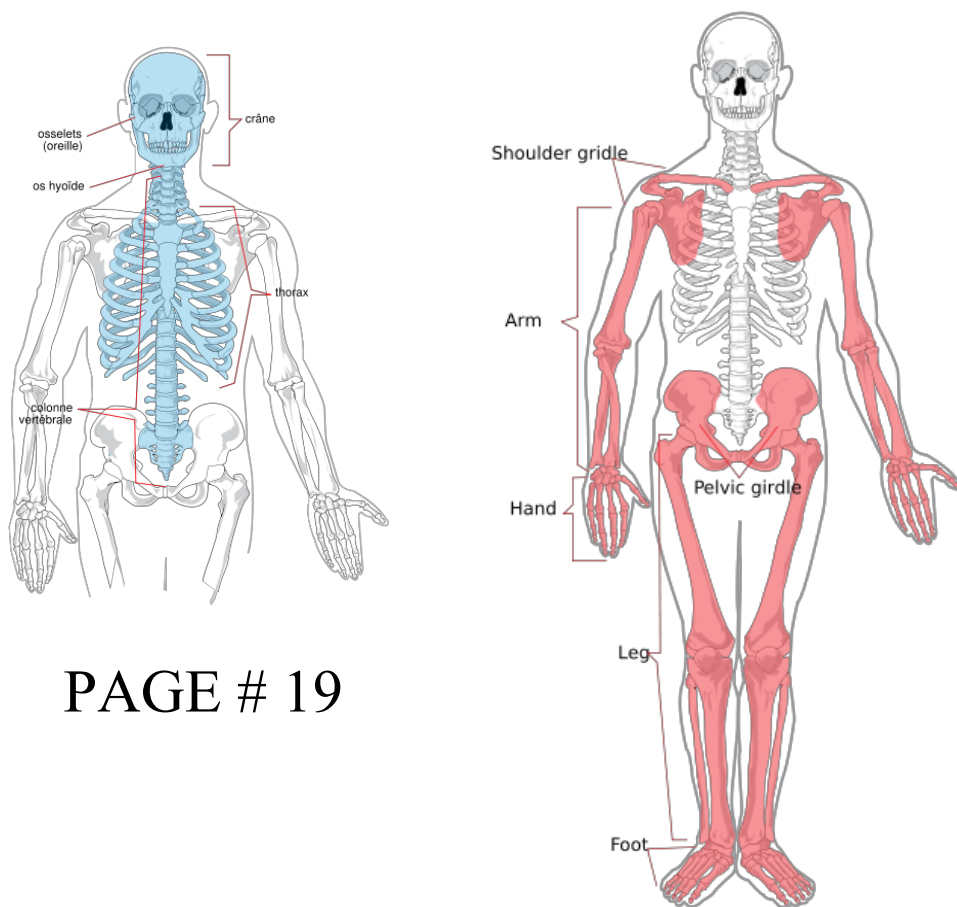
Formation of a cartilage "model" is the first step in the development and growth of a long bone. As the model grows, ossification (creation of hard bone tissue) begins in the central portion, which will become the **diaphysis**. This area is termed the **primary ossification center**.

Later, the extremities of the template each develop ossification centers called **secondary ossification centers**, which are located in the **epiphyses** (proximal and distal ends of the bone).



Bone Growth

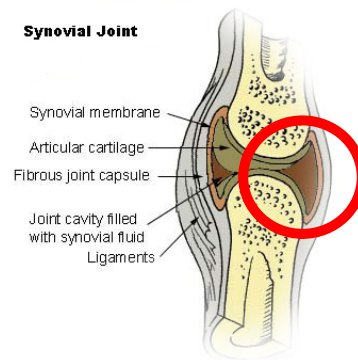
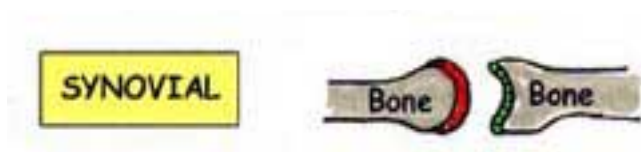
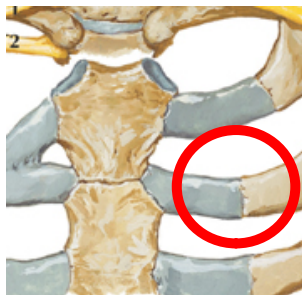
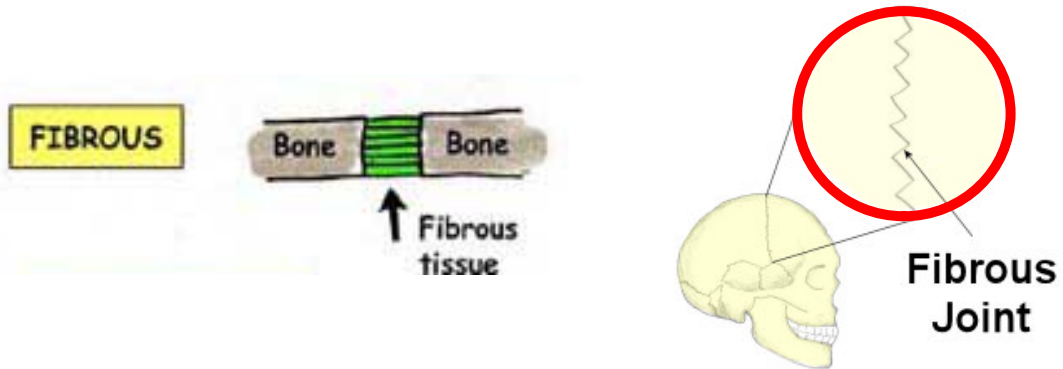
AXIAL / APPENDICULAR SKELETON



PAGE # 19

CLASSIFICATION OF JOINTS

PAGE # 20



TYPE OF JOINTS

PAGE #20

