

**Spine**

**cervical vertebrae**  
**thoracic vertebrae**  
**lumbar vertebrae**  
**sacrum**  
**coccyx**

7 cervical vertebrae

12 thoracic vertebrae

5 lumbar vertebrae

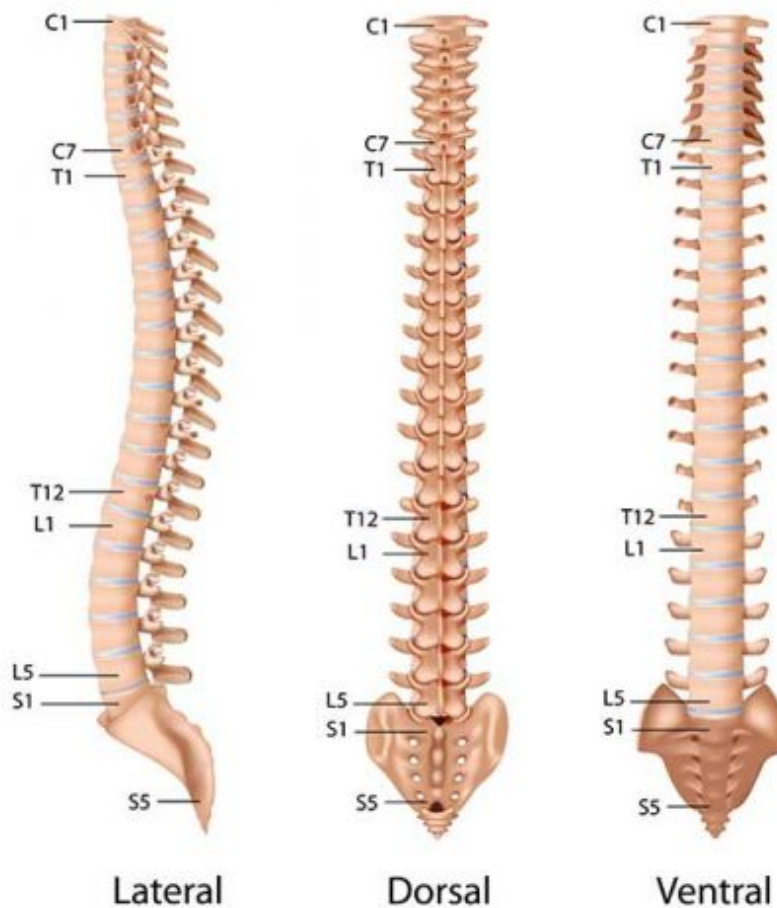
1-5 sacral region

1-3 coccygeal region



and alignment conditions...

- kyphosis
- lordosis
- scoliosis



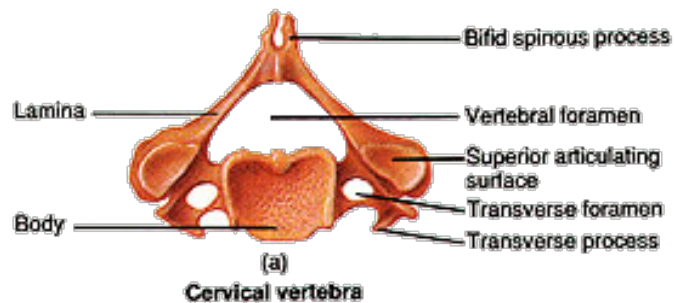
**Atlas**

PAGE #26 - 27

**Axis**

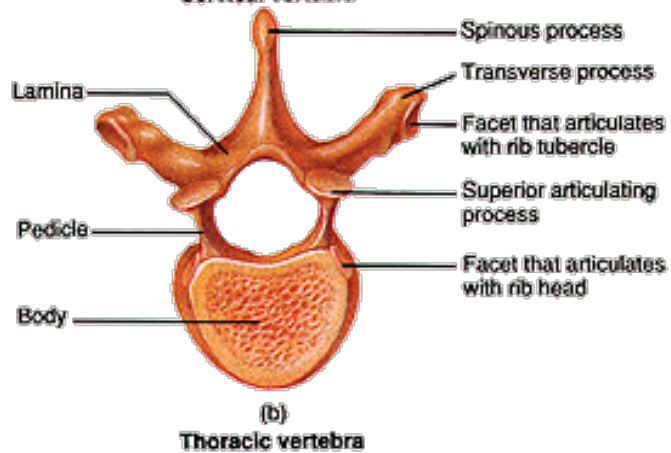
**Cervical Vertebrae**

- body
- pedicle
- transverse process
- articular process
- facet
- lamina
- spinous process



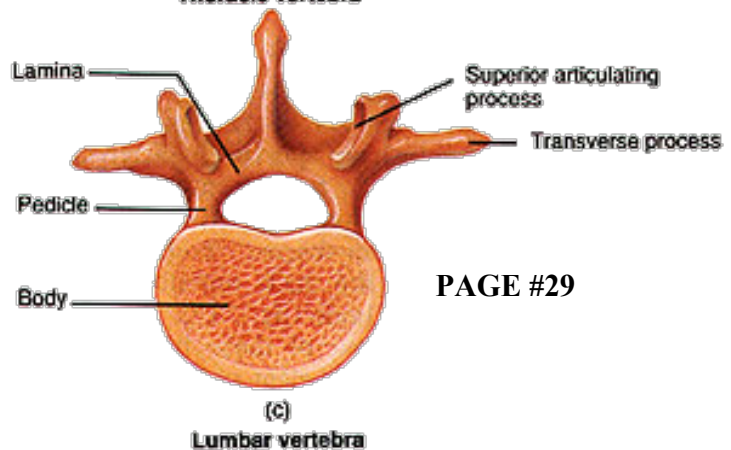
**Thoracic Vertebrae**

- body
- facet
- demifacet
- transverse facet
- rib
- ligament

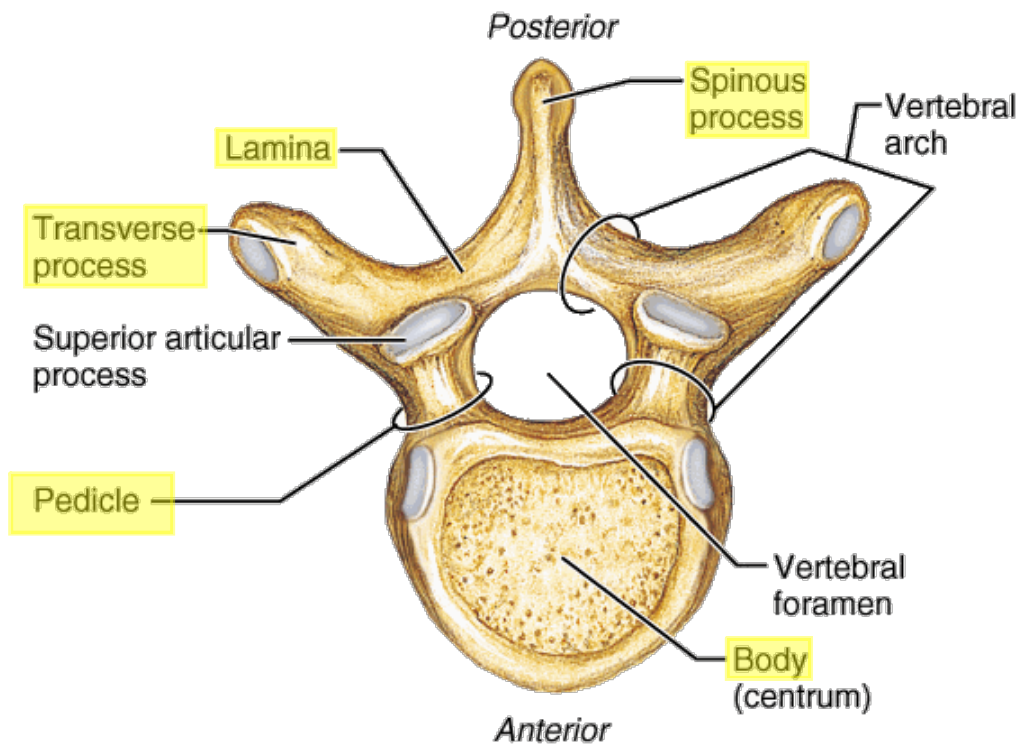


**Lumbar Vertebrae**

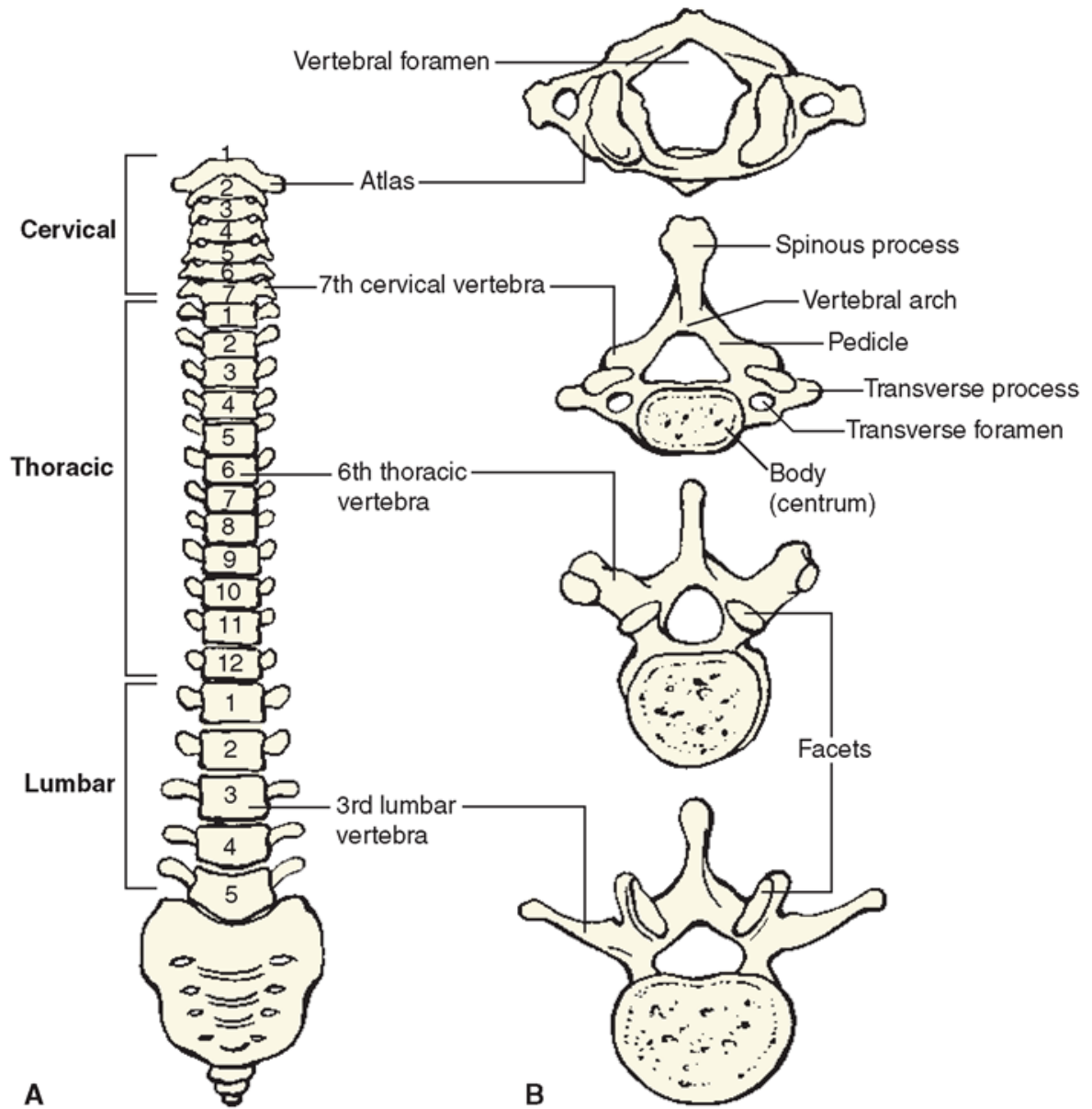
- vertebral foramen
- vertebral canal
- intervertebral foramen
- intervertebral disc



PAGE #29



Copyright © 2001 Benjamin Cummings, an imprint of Addison Wesley Longman, Inc.



## Attachments

---

ANATOMY - Skull Bones.mp4