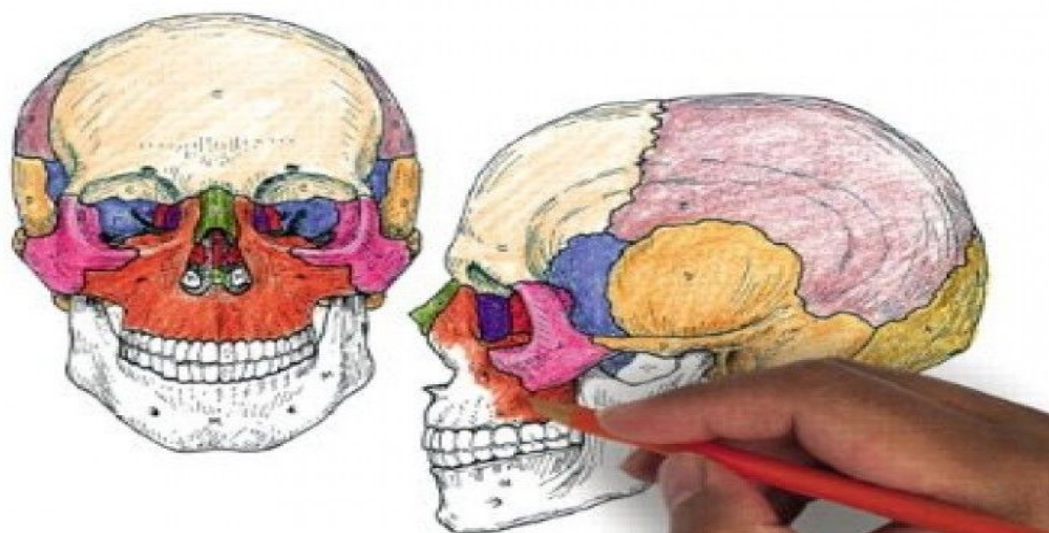


# The **ANATOMY** **COLORING BOOK**

Wynn Kapit / Lawrence M. Elson

4th Edition  
of the Classic  
Over 4 million in print



## BONES OF THE SKULL

### 8 CRANIAL

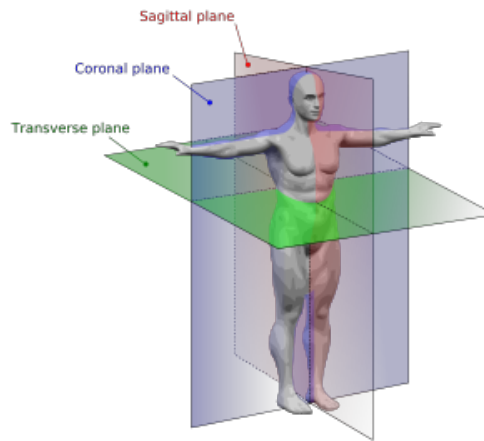
OCIPITAL (1), PARIETAL (2), FRON  
TEMPORAL (2), ETHMOID (1), SPHE

### 14 FACIAL

NASAL (2), VOMER (1), LACRIMAL (2)  
ZYGOMATIC (2), PALATINE (2), MAXILLA (2)  
MANDIBLE (1), INFERIOR NASAL CONCHA (2)

## Anatomical Planes and Cross Sections

- median
- sagittal
- frontal (coronal)
- transverse (cross)

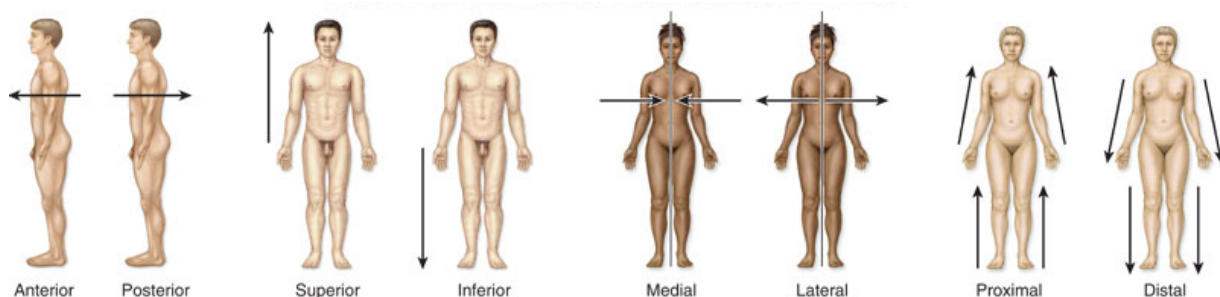


PAGE#1

## Terms of Position and Direction

PAGE #2

- |                               |                 |
|-------------------------------|-----------------|
| ● anterior (ventral)          | ● proximal      |
| ● posterior (dorsal)          | ● distal        |
| ● superior (cranial, rostral) | ● superficial   |
| ● inferior (caudal)           | ● deep          |
| ● medial                      | ● ipsilateral   |
| ● lateral                     | ● contralateral |



Terms of Movement

- extension
- flexion
- dorsiflexion
- plantarflexion
- adduction
- abduction

PAGE #21

- circumduction
- rotation
- supination
- pronation
- inversion
- eversion

