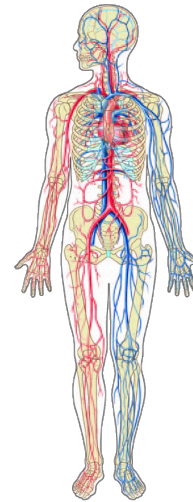


Blood Vessels (102)

- large arteries
- medium arteries
- small arteries (arterioles)
- capillaries
- small veins (venules)
- medium veins
- large veins



and the basic vessel features...

Tunica Interna

- endothelium
- internal elastic lamina

Tunica Media

- smooth muscle
- external elastic lamina

Tunica Externa

- fibrous tissue

